



PRESQUE ISLE DISTRICT LIBRARY

# 2024 ANNUAL REPORT



Greetings to our community of Presque Isle County! The District Library continues to grow by increasing our community engagement. We are excited to announce our **new** mission statement, which fully pledges our commitment to our community. We celebrate our team who are dedicated to the success of our library and community.

THE PRESQUE ISLE DISTRICT LIBRARY ENGAGES AND EMPOWERS OUR COMMUNITY BY PROVIDING EDUCATIONAL AND ENTERTAINING COLLECTIONS AND PROGRAMMING THAT INCLUDES DIVERSE ARTISTIC AND CULTURAL INTERESTS.

## OUR NUMBERS



50,872 Circulation

62,450 Collection Total 



15,592 Circulation

2,663 Items

Borrowed & Loaned 



9,745 Reference



48 Notaries



1,213 Seed Circulation



4,518 Registered Users

100,408 Patron Activity 

## ONLINE



PIDL 1,908

THEATER 2,616



Instagram 726 total



Computer Usage- 6,753



WiFi Usage - 12,908



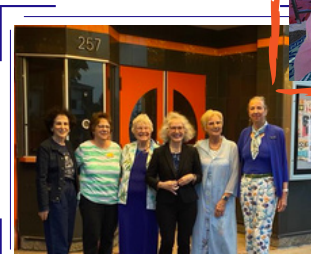
Hotspots Loaned - 357

Grand Lake | Millersburg | Onaway | Posen  
Rogers City | Rogers Theater

# OUR COMMUNITY

- Formal Wear Closet @ Rogers City
- Card Making Workshop @ Grand Lake
- Recipe Book Club
- Craft Supply Swap-Shop
- Neighborhood Forest Tree Giveaway
- Family Game Night @ Millersburg
- One Step at a Time: A Health & Wellness Journey
- "Embryology" with MSU Extension
- Coast Watchers - presented by Huron Pines
- Birds of Michigan, Naturalist Photographer Wayne Pope
- Smartphone Photography with Wayne Pope
- Space Days @ the Library
- Bike Maintenance Class
- Sunflower Growing Contest @ Millersburg
- Financial Literacy Month @ Alpena Alcona Area Credit Union
- Storytime at the Lighthouses with Ms. Kelly
- Plant Your Own Seed at Tractor Supply Co. with Ms. Kelly
- Mad Science @ Millersburg
- LEGO Club at Millersburg, Onaway, Posen, and Rogers City Libraries
- Library Card Sign-up Open Houses @ Rogers City, Posen, Onaway, St. Ignatus
- Vaccine Clinic by LeFave Pharmacy
- Healthy Living for Your Brain & Body presented by The Alzheimer's Association Michigan Chapter
- Library Card Sign-Up Booth at Project Connect locations
- Puzzle Nights @ Rogers City
- Spring & Fall Fest Art Walk
- Crochet Club for Teens @ Rogers City
- Spooky Tin Can Lantern Craft @ Millersburg
- Teen "Fiction Addiction" Book Club
- YUM Club @ Rogers City
- "Aunt Marge" with author Peg Herring @ Onaway
- "The Real Two Hearted" with author Bob Otwell @ Rogers City
- Book Bundle Checkout Event District-wide
- Making Medilodge Colorful with Placemat Art with the Literacy Legacy Fund
- Holiday Card Making @ Millersburg
- Posen Cookie Swap
- Book Clubs @ All District Libraries
- Craft Groups @ Various District Libraries

In partnership with the Rogers City Area Zonta: Former U.S. ambassador to Ukraine, Marie Yovanovitch, "Lessons from the Edge" a New York Times best-selling memoir, shares her career as a Foreign Service diplomat







Ms. Kelly

Storytimes -  
1,326 Attendance  
Summer Reading  
Minutes Read = 124,200

Other Kids  
Programming - 1,300

Teen Programming - 170

## ROGERS CITY ELEMENTARY SCHOOL

OUTREACH LIBRARIAN

Programs - 303

Program Attendance - 7,609

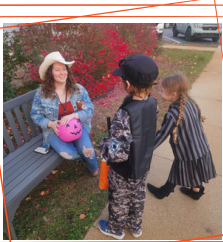
Patron Activity - 9,483



## New Teen Librarian



Madi Purol is our first Teen Librarian. She started in the Concessions at the Rogers Theater and became a clerk at the Rogers City Main Library while attending Alpena Community College. Upon graduation with an Associate in Liberal Arts, she was promoted to Teen Librarian and Outreach.



- 4th Annual Film Noir series
- Hollywood Movie Musicals
- Community Pirate Festival Film
- Great Waters Short Film Festival with The Sunset Project
- Screening "Marqueetown" and fundraiser
- 12th Annual Thunder Bay International Film Festival
- Spring & Fall Fest Art Walk
- 27th Annual Manhattan Short Film Festival
- "The Salmon Capital of Michigan: The Rise and Fall of a Great Lakes Fishery" book launch as told by Rogers City community members
- "Arthur Christmas" Family Christmas Program co-sponsored with Rogers City DDA
- Northeast Exposure Music Series with Bourbon & Brass Company and MoTown Eagles

### NOW SHOWING

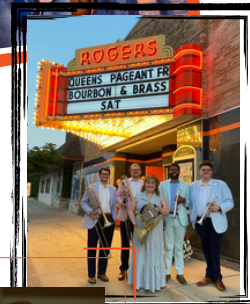


44 Movies Screened

44 Programs

32 Rentals

Total Attendance = 6,691



# OUR IMPACT

- Northland Library Cooperative Enhancement Grant funded sustainable landscaping at the Posen branch.
- Northeast Exposure Music Series grant from Community Foundation of Northeast Michigan (CFNEM).
- Expanded Shelving in Millersburg
- Renovated Concessions area at Rogers Theater
- Rogers Theater was added to the National Register of Historic Places by the State Historic Preservation Office of Michigan.



## FRIENDS GROUPS

Prizes

Storywalks

Programming

Craft Supplies

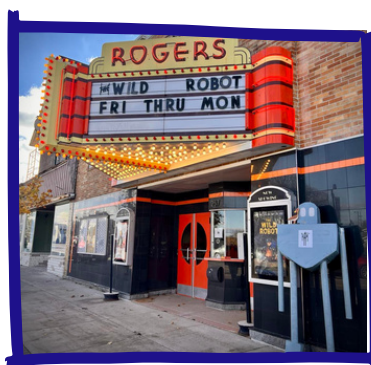
School Supplies

Charging Cables

Magazine Subscriptions

Popcorn Supplies/Giveaways

Summer Reading Program & Giveaways



## Expenditures

Employment Costs - \$622,505

Materials - 50,746

Building & Maintenance - 52,980

Programming - 29,409

Education - 5,876

Utilities - 40,552

Rent - 15,000

Supplies - 19,664

Technology - 51,075

Misc. - 51,541

Capital Outlay - 93,946

Millage Revenue - \$835,000

Grants - 7,984

State Aid - 14,626

Funds - 12,486

Donations - 31,263

Local Pena Fines - 30,016

Fines - 89

Sales - 26,134

Interest - 24,200

Programming - 22,090

Rent - 13,419

Other - 1,344

Revenue

## Board of Trustees

Beach Hall

Terri Koss

Jennifer Altman

Mary Hentkowski

Arthur Nash

Joni Rogers

Colleen Whitsitt

## OUR COMMITMENT

ENGAGE

EMPOWER

EDUCATE

ENTERTAIN



MIDWEST COLLABORATIVE  
for LIBRARY SERVICES  
Building better libraries



MICHIGAN  
ARTS &  
CULTURE  
COUNCIL

